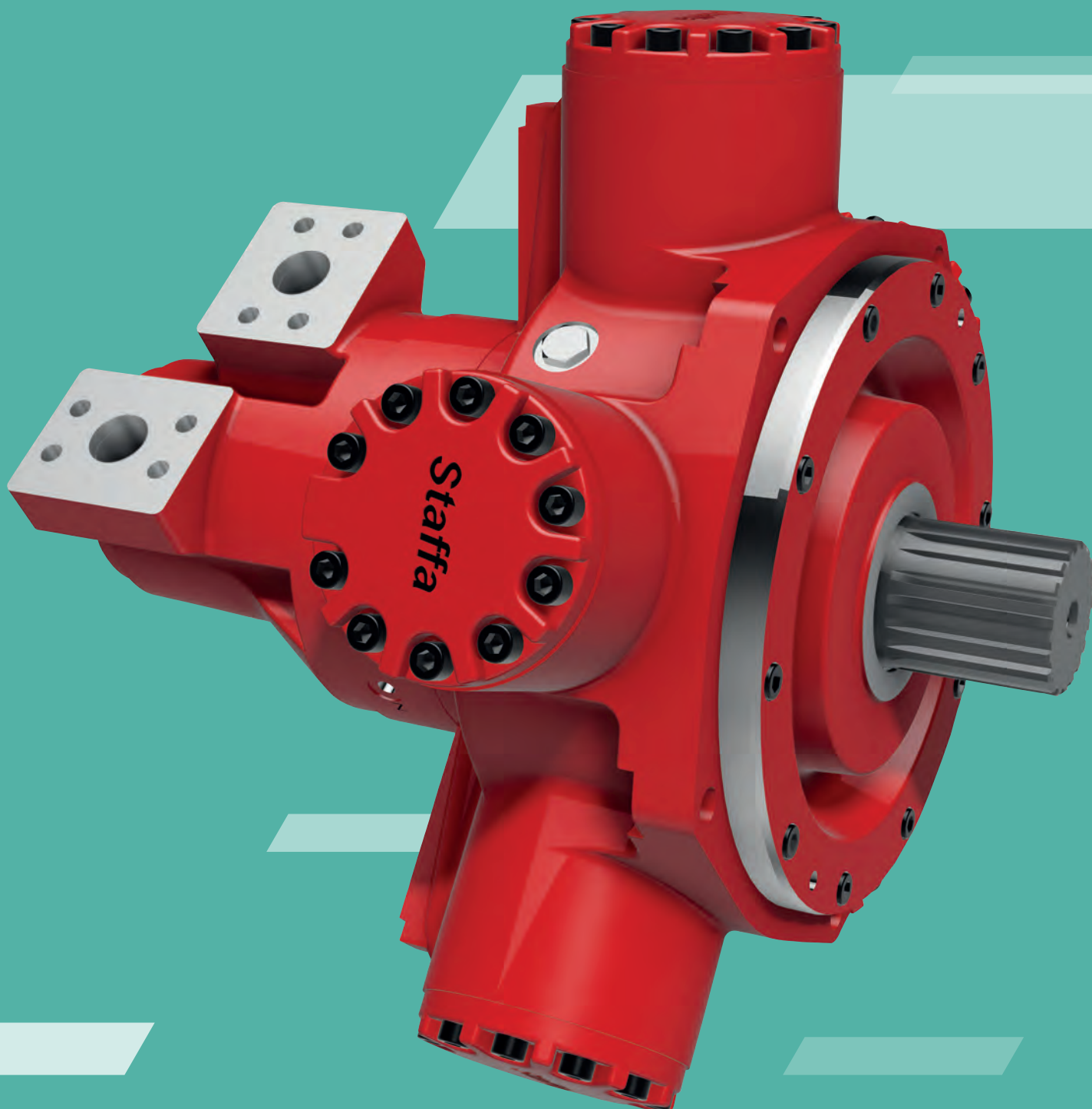


Staffa:

Radial piston
motors for the
Marine sector



Just like the world's oceans, the marine industry never stands still...

We're global-leaders in precision engineering, with over a century's experience designing cutting-edge solutions for demanding applications in agriculture, marine, aerospace and industrial sectors.


STAFFA NEVER STOPS

Staffa has set the benchmark for radial piston motors for more than 60 years. And all that time, we've been relentlessly improving and innovating to stay ahead of changing technology. The result? Our reliability leads the world. And our reinvention never stops. Just like the Staffa.





STAFFA NEVER STOPS



We're proud that the Staffa name has become synonymous with best-in-class radial piston motors. The range offers a choice of fixed, variable and high power versions to give you high-torque, low-speed control that never stops.

The Staffa's unique design ensures high efficiency, good breakout torque and smooth running capability, making it the perfect partner for a wide range of Marine applications, including:

Offshore winches

Trust Staffa to deliver reliable, controllable winching power whenever you need it.

Deck machinery

Staffa's innovative, adaptable range is ideal for powering cranes, anchor systems, windlasses and more with exceptional efficiency and reliability.

Bow thrusters

Precision control and absolute reliability are essential when safely manoeuvring a ship, which is why the marine industry relies on Staffa-powered bow thrusters to keep on working safely, from small cargo vessels up to ULCC-class supertankers.

Capstans

Tough construction, high power and high torque make Staffa the go-to motor for hardworking capstans all over the world.

The Staffa's hydraulically-balanced construction and our no-compromise approach to quality give you a motor you can depend on. A motor that never stops.

Your motor. Your way.

The Staffa brand is famous for outstanding quality, efficiency and reliability. Staffa's only built by us, and always built to last.

To make sure our world-class motors are perfectly suited to all applications, we've innovated a range of special design features, which you can add to your Staffa. From greater starting torque to marine-specific primer paint, there's a design feature to ensure your Staffa never stops, whatever the task.

STAFFA NEVER STOPS

We've now integrated each of these special features, as part of the model code, so finding and ordering the exact features you need has never been easier.





STAFFA NEVER STOPS

Staffa special features

- /// High pressure shaft seal
- /// Improved shaft seal life
- /// Improved cavitation resistance
- /// Anti-pooling bolt heads
- /// Increased starting torque
- /// Anti-clockwise rotation
- /// Thermal shock resistance
- /// Drain port adaptors
- /// $\phi 21\text{mm}$ or $\phi 22\text{ mm}$ mounting holes
- /// Marine specification primer paint
- /// Increased power rating

Stronger. Smarter. Staffa.

Whatever the task or application, there's a Staffa to suit your needs. We offer a range of sizes, displacement and control options. All built only by us. All built with cutting-edge technology. All built to last.

STAFFA NEVER STOPS



HMF

The latest addition to the Staffa range. Our all-new HMF three-speed motor is available in four frame sizes, ranging from 1,475 cc/rev to 5,326 cc/rev. With three displacement modes, it's the only motor of its kind currently on the market. Choose your three ideal pre-set displacements from a wide range to suit your specific needs, and change displacement with ease while your HMF just keeps on running.

- 3 displacement modes
- Freewheel option available
- Dynamic displacement change
- Speed sensing options



Type		HMF080	HMF200	HMF270	HMF325
Displacement (cc/rev)		1,475	3,087	4,588	5,326
Pressure (bar)	Rated	250			
	Peak	275			
Speed (rpm)	Max	270	175	150	130

* Performance figures as HMC range

STAFFA NEVER STOPS

HMC

The variable displacement HMC series offers two pre-set displacements which you can select from a wide range to match your specific project. These motors are also available in a continuously variable version, using either hydro-mechanical or electro-hydraulic control methods.

- 492 to 5,326cc displacements in 7 frame sizes
- 250 bar continuous pressure rating
- Dynamic displacement change
- Freewheel option available
- Continuously variable displacement or constant pressure control options



Model	HMC30	HMC45	HMC80	HMC125	HMC200	HMC270	HMC325	
Displacement (cc/rev)	492	737	1475	2048	3080	4588	5326	Max.
	246	573	737	983	1470	1310	1557	Min.
Average actual running torque (Nm/bar)	6.86	10.63	23.9	29.9	46.6	69.4	80.4	Max.
	3.2	4.4	12	12.8	21	22.4	27.9	Min.
Max. continuous speed (rpm)	450	450	270	215	175	150	130	Max.
	600	600	500	450	300	375	330	Min.
Max. continuous output (Kw)	60	99	138	135	174	213	213	Max.
	35	42	105	81	105	107	120	Min.
Max. continuous pressure (bar)	207	250						
Max. intermittent pressure (bar)	241	275						

HMB



The tried and tested design of our fixed-displacement HMB series gives you impressive efficiency, good breakout torque and smooth running capability.

- 188 to 8,000cc displacements in 12 frame sizes
- 250 bar continuous pressure rating
- High volumetric and mechanical efficiency
- Unique hydrostatic balancing provides minimum wear and extended life

Model	HMB10	HMB30	HMB45	HMB60	HMB80	HMB100	HMB125	HMB150	HMB200	HMB270	HMB325	HMB400
Displacement (cc/rev)	188	442	740	983	1,344	1,639	2,050	2,470	3,087	4,310	5,310	6,800
Average actual running torque (Nm/bar)	2.79	6.56	10.95	14.5	19.9	24.3	30.66	36.95	46.07	63.79	79.4	101
Max. continuous speed (rpm)	500	450	400	300	300	250	220		175	125	100	120
Max. continuous output (Kw)	25	42	60	80	100	110	100	115	130	140		190
Max. continuous pressure (bar)	207		250			250						
Max. intermittent pressure (bar)	241	275			275							

STAFFA NEVER STOP!

HPC



Our enhanced variable displacement HPC models include special low friction components, combined with crankcase flushing flow, to achieve increased shaft power. Relied on all around the world for its efficiency and reliability. Enhanced power that never stops.

- 1,344 to 6,555cc displacements in 6 frame sizes
- 250 bar continuous pressure rating
- Dynamic displacement change
- Freewheel option available
- Continuously variable displacement or constant pressure control options

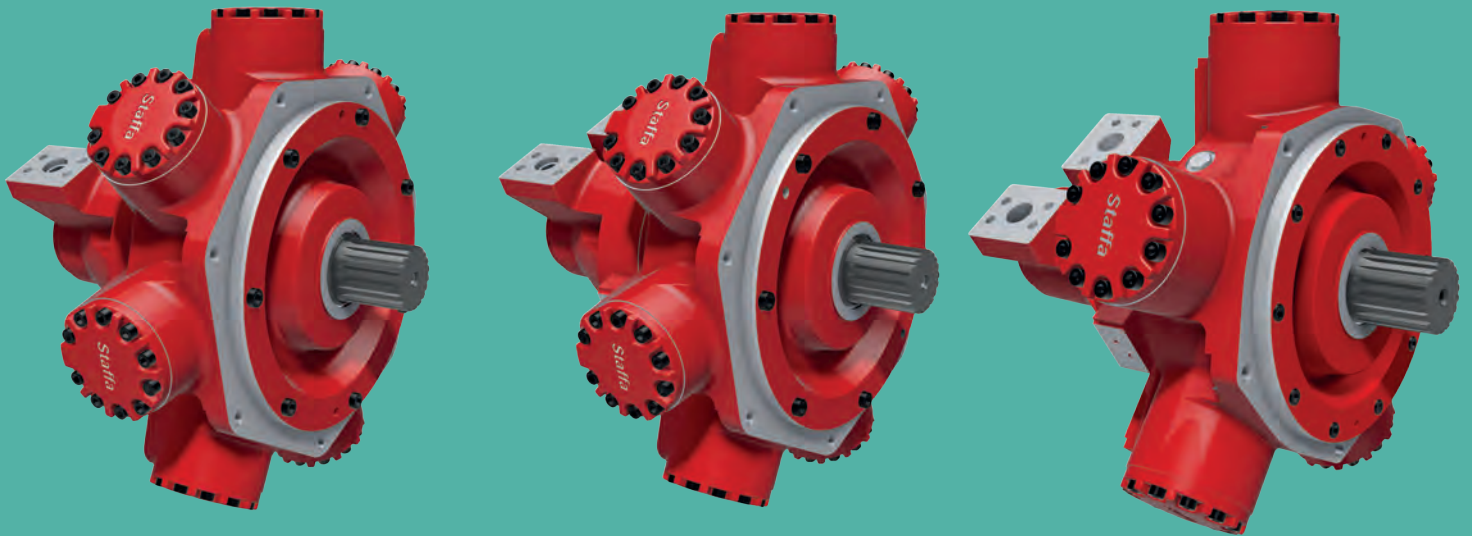
Model	HPC80	HPC125	HPC200	HPC270	HPC325	
Displacement (cc/rev)	1,600	2,048	4,588	2048	5,326	Max.
	819	1,147	737	1,966	2,294	Min.
Average actual running torque (Nm/bar)	24.1	30.8	47.2	70.1	81.6	Max.
	11.9	16.5	24.1	28.6	33.6	Min.
Max. continuous speed (rpm)	270	215	175	150	130	Max.
	500	390	270	310	275	Min.
Max. continuous output (Kw)	165	173	216	278	278	Max.
	120	123	170	156	174	Min.
Max. continuous pressure (bar)	250					
Max. intermittent pressure (bar)	275					



STAFFA NEVER STOPS

Innovation. Efficiency. Reliability.

Construction / Industrial /
Marine / Agriculture / Forestry



Kawasaki Precision Machinery UK
Ernesettle Lane, Ernesettle
Plymouth PL5 2SA

**Kawasaki Heavy Industries,
Precision Machinery Company**
1-14-5, Kaigan, Minato-Ku Tokyo
105-8315 Japan

Kawasaki Precision Machinery (U.S.A.), Inc.
3838 Broadmoor Avenue S.E.
Grand Rapids, Michigan 49512, USA